

HITACHI

NEW
SuperEX
EX300

Rated engine HP: 162 kW (220 PS)

Operating weights

EX300-3: 28 600 kg (63 100 lb)

EX300LC-3: 30 200 kg (66 600 lb)

EX300H-3: 29 300 kg (64 600 lb)

EX300LCH-3: 30 000 kg (66 200 lb)

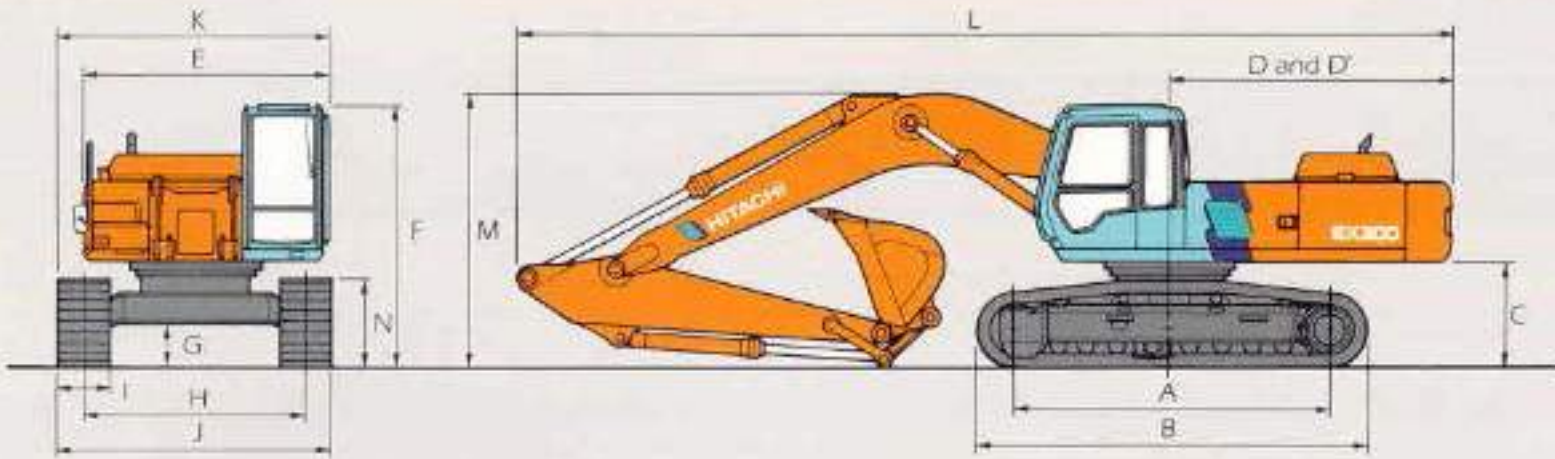
Bucket capacity

PCSA heaped: 1.15—1.86 m³ (1.50—2.43 yd³)

CECE heaped: 1.00—1.60 m³



DIMENSIONS



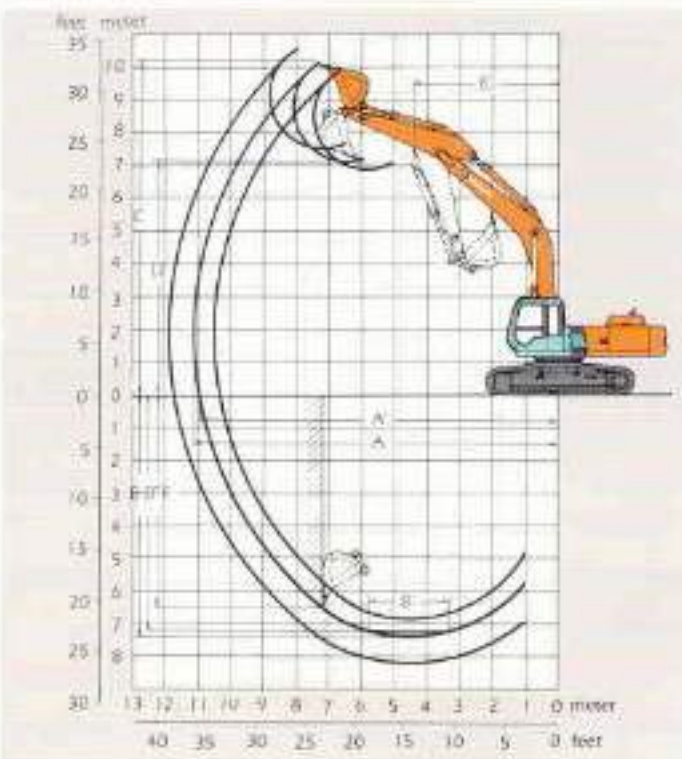
| | EX300-3 | EX300H-3 | EX300LC-3 | EX300LCH-3 |
|------------------------------------|--------------------|----------------------|--------------------|----------------------|
| A Distance between tumbler centers | 3 710 mm (12'2") | 3 710 mm (12'2") | 4 010 mm (13'2") | 4 010 mm (13'2") |
| B Undercarriage length | 4 570 mm (15'0") | 4 570 mm (15'0") | 4 870 mm (16'0") | 4 870 mm (16'0") |
| *C Counterweight clearance | 1 175 mm (3'10") | 1 175 mm (3'10") | 1 175 mm (3'10") | 1 175 mm (3'10") |
| D Rear-end swing radius | 3 300 mm (10'10") | 3 300 mm (10'10") | 3 300 mm (10'10") | 3 300 mm (10'10") |
| D' Rear-end length | 3 290 mm (10'10") | 3 290 mm (10'10") | 3 290 mm (10'10") | 3 290 mm (10'10") |
| E Overall width of upperstructure | 2 880 mm (9'5") | 2 880 mm (9'5") | 2 880 mm (9'5") | 2 880 mm (9'5") |
| F Overall height of cab | 3 010 mm (9'11") | 3 010 mm (9'11") | 3 010 mm (9'11") | 3 010 mm (9'11") |
| *G Min. ground clearance | 500 mm (1'8") | 500 mm (1'8") | 500 mm (1'8") | 500 mm (1'8") |
| H Track gauge | 2 590 mm (8'6") | 2 590 mm (8'6") | 2 590 mm (8'6") | 2 590 mm (8'6") |
| I Track shoe width | 660 mm (24") | 660 mm (24") | 680 mm (31") | 660 mm (24") |
| J Undercarriage width | 3 190 mm (10'6") | 3 190 mm (10'6") | 3 390 mm (11'1") | 3 190 mm (10'6") |
| K Overall width | 3 190 mm (10'6") | 3 190 mm (10'6") | 3 390 mm (11'1") | 3 190 mm (10'6") |
| L Overall length | | | | |
| With 2.66 m (8'9") arm | 11 060 mm (36'3") | — | 11 060 mm (36'3") | — |
| With 3.20 m (10'6") arm | 10 940 mm (35'11") | **10 940 mm (35'11") | 10 940 mm (35'11") | **10 940 mm (35'11") |
| With 4.00 m (13'1") arm | 11 010 mm (36'1") | — | 11 010 mm (36'1") | — |
| M Overall height of boom | | | | |
| With 2.66 m (8'9") arm | 3 410 mm (11'2") | — | 3 410 mm (11'2") | — |
| With 3.20 m (10'6") arm | 3 200 mm (10'6") | **3 200 mm (10'6") | 3 200 mm (10'6") | **3 200 mm (10'6") |
| With 4.00 m (13'1") arm | 3 490 mm (11'5") | — | 3 490 mm (11'5") | — |
| N Track height | 1 000 mm (3'3") | 1 000 mm (3'3") | 1 000 mm (3'3") | 1 000 mm (3'3") |

* Excluding track shoe lug

** Equipped with H-Front

G: Triple grouser shoe

WORKING RANGES



EX300-3/EX300LC-3, EX300H-3/EX300LCH-3

| Arm length | EX300-3/EX300LC-3 | | | EX300H-3/EX300LCH-3 |
|-----------------------------------|-----------------------------------|-----------------------------------|-----------------------------------|---|
| | 2.66 m (8'9") | 3.20 m (10'6") | 4.00 m (13'1") | 6.40 m (21'0") H-boom 3.20 m (10'6") H-arm |
| A Max. digging reach | 10 570 mm (34'8") | 11 100 mm (36'5") | 11 860 mm (38'11") | 11 100 mm (36'5") |
| A' Max. digging reach (on ground) | 10 360 mm (34'0") | 10 900 mm (35'9") | 11 680 mm (38'4") | 10 900 mm (35'9") |
| B Max. digging depth | 6 840 mm (22'5") | 7 380 mm (24'3") | 8 180 mm (26'10") | 7 380 mm (24'3") |
| B' Max. digging depth (B' level) | 6 650 mm (21'10") | 7 220 mm (23'8") | 8 050 mm (26'5") | 7 220 mm (23'8") |
| C Max. cutting height | 9 850 mm (32'4") | 10 220 mm (33'6") | 10 600 mm (34'9") | 10 220 mm (33'6") |
| D Max. dumping height | 6 810 mm (22'4") | 7 120 mm (23'4") | 7 490 mm (24'7") | 7 120 mm (23'4") |
| E Min. swing radius | 4 540 mm (14'11") | 4 450 mm (14'7") | 4 380 mm (14'4") | 4 450 mm (14'7") |
| F Max. vertical wall | 5 610 mm (18'5") | 6 480 mm (21'3") | 7 360 mm (24'2") | 6 480 mm (21'3") |
| Bucket digging force | 177.5 kN (18 100 kgf, 39 900 lbf) | 177.5 kN (18 100 kgf, 39 900 lbf) | 177.5 kN (18 100 kgf, 39 900 lbf) | 177.5 kN (18 100 kgf, 39 900 lbf) |
| Arm digging force | 161.8 kN (16 500 kgf, 36 400 lbf) | 134.4 kN (13 700 kgf, 30 200 lbf) | 115.7 kN (11 800 kgf, 26 000 lbf) | 134.4 kN (13 700 kgf, 30 200 lbf) |

Excluding track shoe lug